

LOTS 1,2,3 BONNIE LANE SUBDIVISION
BONNIE LANE CONDOMINIUM

IN SOUTH OGDEN CITY
SCALE 1" = 30'

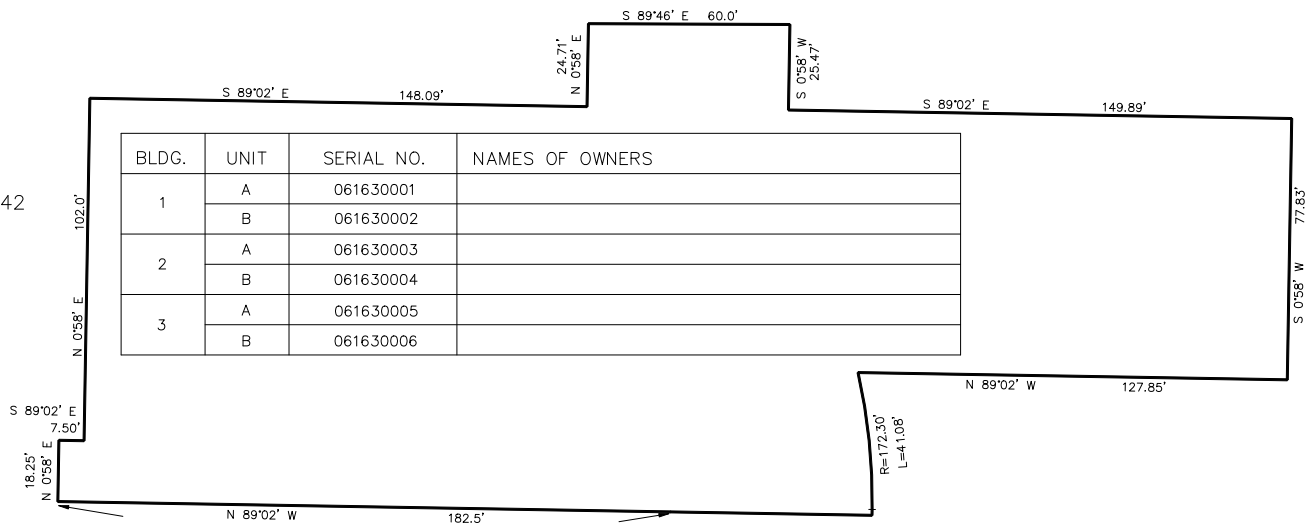
TAXING UNIT: 27

SURVEY PLAT: BOOK 21 OF DEDICATION PLATS, PAGES 45 & 46

SEE PAGE 42

SEE PAGE 42

SEE
PAGE
42



SEE PAGE 155